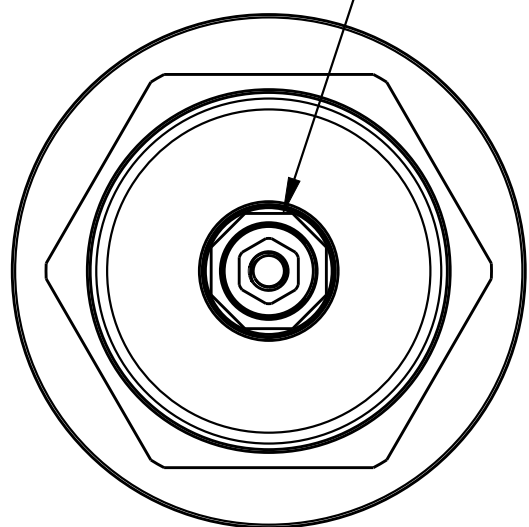
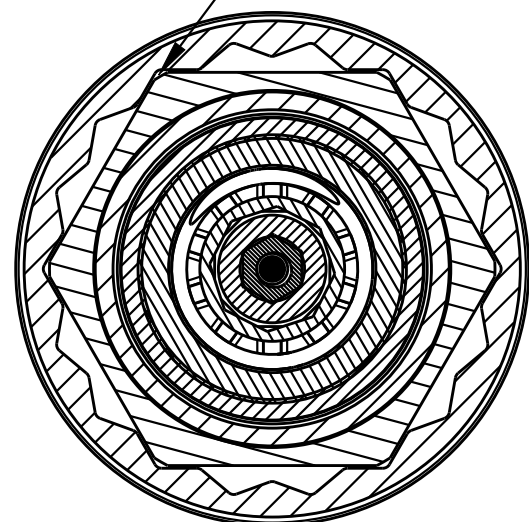


STEP 1: TORQUE HSC COUPLER TO 3 IN-LB



STEP 2: SET HOUSING IN DESIRED POSITION AND INDEX TO TOPCAP HEX. LIFT HOUSING UNTIL PULLEY CAN ROTATE FREE OF HSC COUPLER.



SECTION B-B

STEP 2: HOLD HOUSING IN PLACE AND ROTATE PULLEY UNTIL SET SCREW IS ALIGNED WITH DOT 180° FROM ARROW ON HOUSING. PRESS PULLEY AND HOUSING DOWN INDEXING BOTH TO TOPCAP AND COUPLER AND RELEASE PULLEY.

STEP 2: HOLD HOUSING IN PLACE AND ROTATE PULLEY UNTIL SET SCREW IS ALIGNED WITH DOT 180° FROM ARROW ON HOUSING. PRESS PULLEY AND HOUSING DOWN INDEXING BOTH TO TOPCAP AND COUPLER AND RELEASE PULLEY.

TOPCAP INTERFACE PARTS INSTALL NOTES:

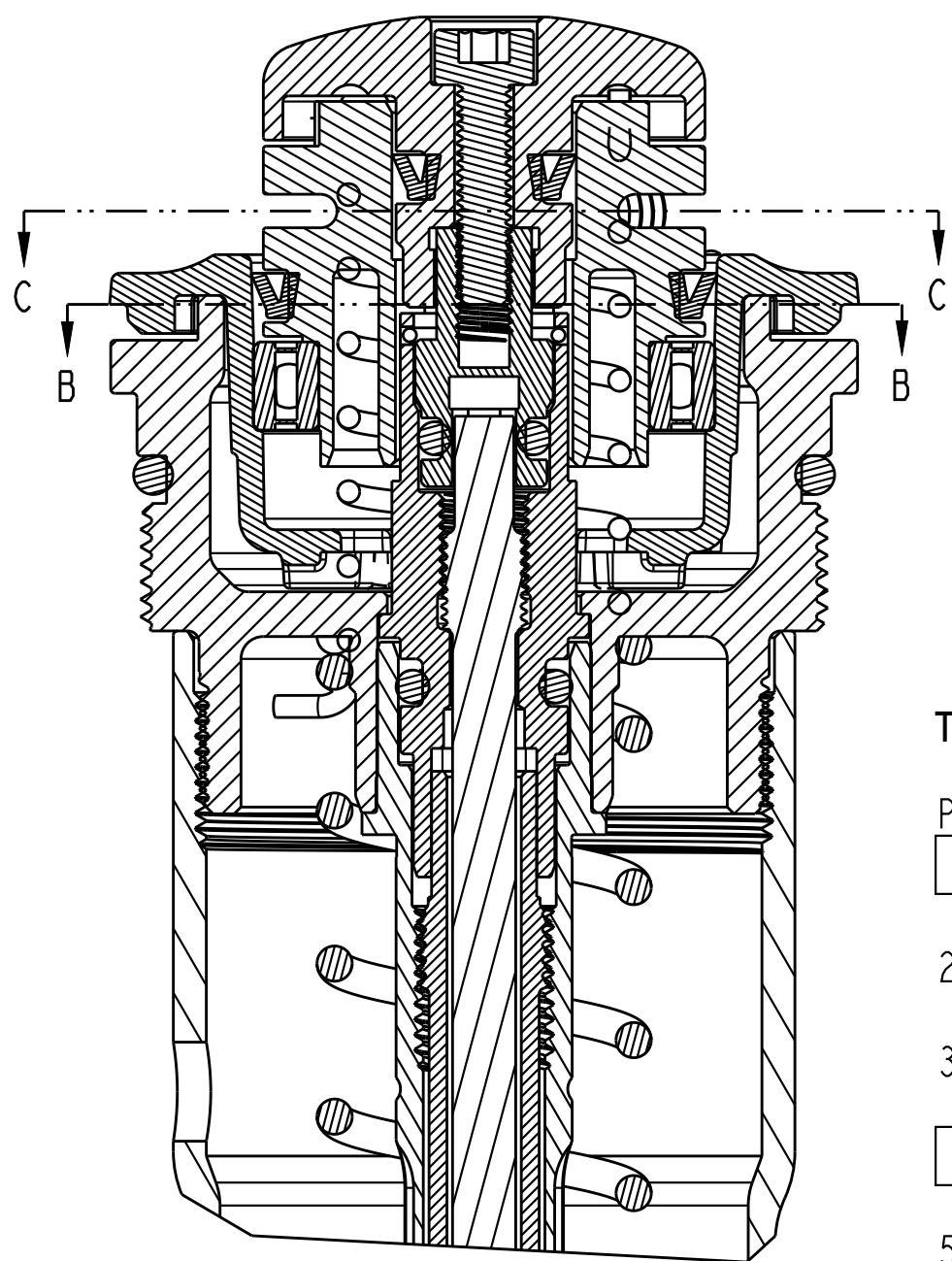
PUSH-TO-LOCK (PTL):

- 1 PTL SUB-ASSEMBLE TOPCAP INTERFACE PARTS WITH PULLEY SET SCREW FACING THE DOT OPPOSITE THE ARROW.
2. INSTALL 1 PTL SUB-ASSY TO DAMPER WITH ARROW FACING DESIRED DIRECTION FOR CABLE ROUTING.
3. ROTATE ENTIRE SUB-ASSY 270° CCW AFTER INSTALLING. CHECK CABLE DIRECTION. TORQUE 019-01-148 WHILE HOLDING PULLEY
- 4 PTL WHEN LOCKED OUT (ADD 5-6 IN-LB CW TORQUE TO PULLEY), SET SCREW MUST BE ALIGNED TO MARK ±20°.
5. PULLEY MUST RETURN FREELY AFTER LOCKOUT (FROM FORCE OF TORSION SPRING ALONE).

PUSH-TO-UNLOCK (PTU):

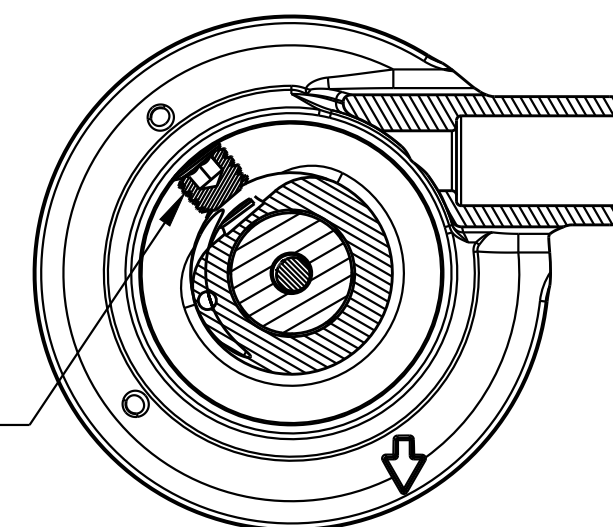
- 1 PTU SUB-ASSEMBLE TOPCAP INTERFACE PARTS WITH PULLEY SET SCREW FACING THE DOT OPPOSITE THE ARROW.
2. INSTALL 1 PTU PARTS SUB-ASSY TO DAMPER WITH ARROW FACING DESIRED DIRECTION FOR CABLE ROUTING. TIGHTEN 019-01-148 4-5 TURNS (DO NOT RUN DOWN).
3. ROTATE ONLY CABLE HOUSING 270° CW TO PRELOAD TORSION SPRING. CHECK CABLE DIRECTION.
- 4 PTU WHEN LOCKED OUT (STEP 3 COMPLETE, NO EXTRA TORQUE ADDED TO PULLEY), CHECK THAT SET SCREW IS ALIGNED TO MARK ±20°. TORQUE 019-01-148 WHILE HOLDING PULLEY.
5. PULLEY MUST RETURN FREELY AFTER UNLOCK (FROM FORCE OF TORSION SPRING ALONE)

SECTION A-A
SCALE 3:1

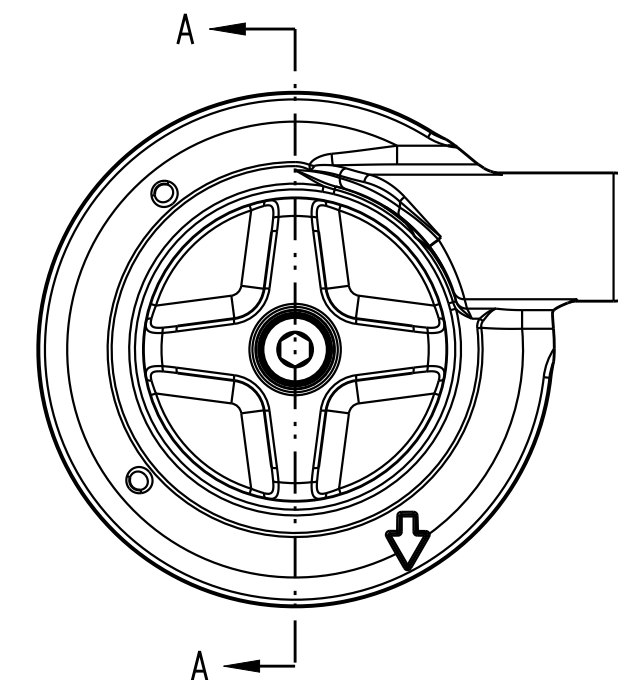


PTL

STEP 3: DETENT SPRING AND BALL INSTALLED IN HSC ADJUSTER



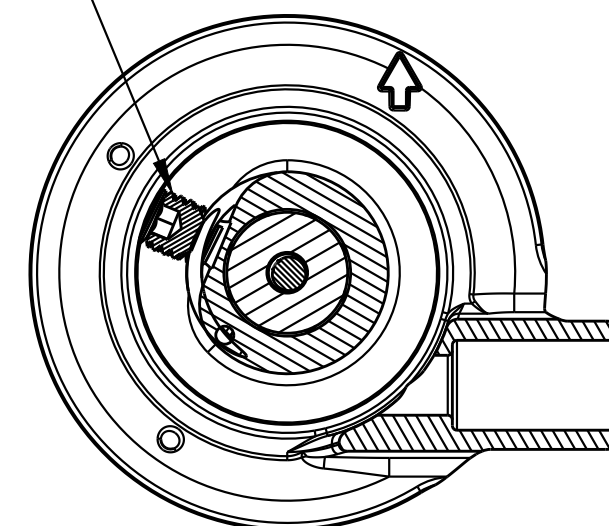
SECTION C-C



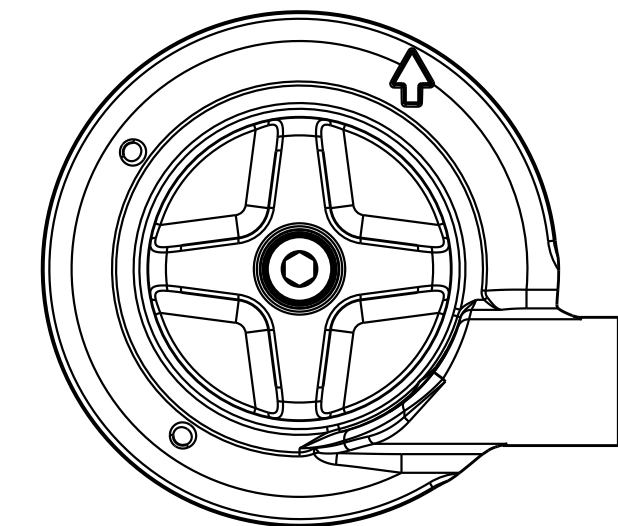
STEP 4: ALIGN HEX FEATURE OF LSC COUPLER TO HEX FEATURE OF LSC ADJUSTER. INSTALL AND TORQUE ADJUSTER FASTENER

PTU

STEP 3: DETENT SPRING AND BALL INSTALLED IN HSC ADJUSTER



SECTION C-C



STEP 4: ALIGN HEX FEATURE OF LSC COUPLER TO HEX FEATURE OF LSC ADJUSTER. INSTALL AND TORQUE ADJUSTER FASTENER